

CUSTOMER: _____

JOB NAME: _____

PO #: _____ QUOTE # _____

DATE: _____ QUANTITY: L _____ R _____

SHIP TO: _____

One Signature Required

PLUMBING CONTRACTOR APPROVAL _____ /_____/_____
DATE

GENERAL CONTRACTOR APPROVAL _____ /_____/_____
DATE

ENGINEER APPROVAL _____ /_____/_____
DATE

ARCHITECT APPROVAL _____ /_____/_____
DATE

To complete your order, this document must be signed and emailed to the Centralized Customer Service Center.
quotes@americanbathgroup.com • 800.443.7269

STANDARD FEATURES

- Pre-leveled base
- AcrylX™ applied acrylic surface
- 1/2" skirt
- 1/2" COL exterior threshold
- Compliant when properly installed
- Center front drain outlet
- Integral front trench drain
- 12" x 24" subway tile
- Slip resistant, textured bottom [ASTM F-462]

Int. Dim.	36 W x 36 D x 76 3/4 H
Ext. Dim.	42 W x 38 1/8 D x 78 3/4 H
Skirt Ht.	1/2 skirt, 1/2 COL exterior threshold
Packaged Wt.	150 lbs.
Material	AcrylX™ applied acrylic
Warranty	30-year warranty*

* See terms and conditions for details

inches

CONFIGURATION (handed by the seat)

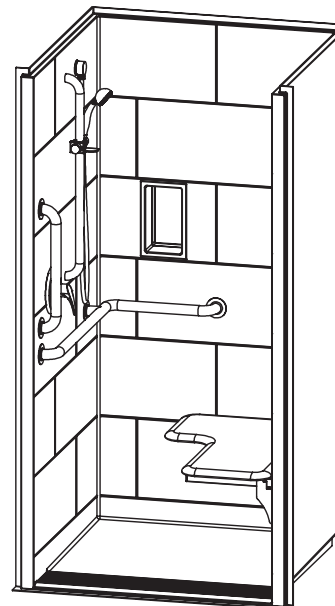
- Shell reinforced for future accessory installation
 - Seat Wall LH RH
 - Optional vertical bar reinforcement (entry wall)
 - LH RH Both
- Fully configured with seat — ANSI
 - Seat Wall (must choose one) LH RH
 - Includes one stainless steel L-shaped grab bar, one stainless steel vertical 18" grab bar, stainless steel grate and cushioned, white, L-shaped fold-up seat, per ADA guidelines. (std config)
 - Factory-installed plumbing options per ANSI requirements
 - Hand-held shower assembly, 30" slide bar and 60" hose
 - Pressure balancing mixing valve

OPTIONAL ACCESSORIES (available for all models)

- Stainless steel vertical bar 24" x 1 1/2" (entry wall)
 - LH RH Both
- Large soap dish (12 1/2 W x 3 1/2 D x 1 1/2 H), shipped loose
- Small soap dish (7 W x 3 1/2 D x 1 1/2 H), shipped loose
- Curtain rod, shipped loose
- Shower curtain, shipped loose
- Brass drain
- Colors:
 - Standard White
 - Upgraded Biscuit Bone
 - Other (contact customer service for custom color options)
- Additional accessories:

CUSTOM OPTIONS (not avail. if ANSI configuration is selected)

- Handed by the seat LH RH
- Reinforced for future seat installation
- L-shaped fold-up seat
 - Cushioned white Phenolic teak Phenolic white
- Horizontal L-shaped grab bars:
 - Stainless steel (1 1/2" dia.)
 - Powder-coated white (1 1/4" dia.)
- Factory-installed plumbing options per ANSI requirements
 - Hand-held shower assembly, 30" slide bar and 60" hose
 - Pressure balancing mixing valve
- Grate:
 - Stainless steel
 - White



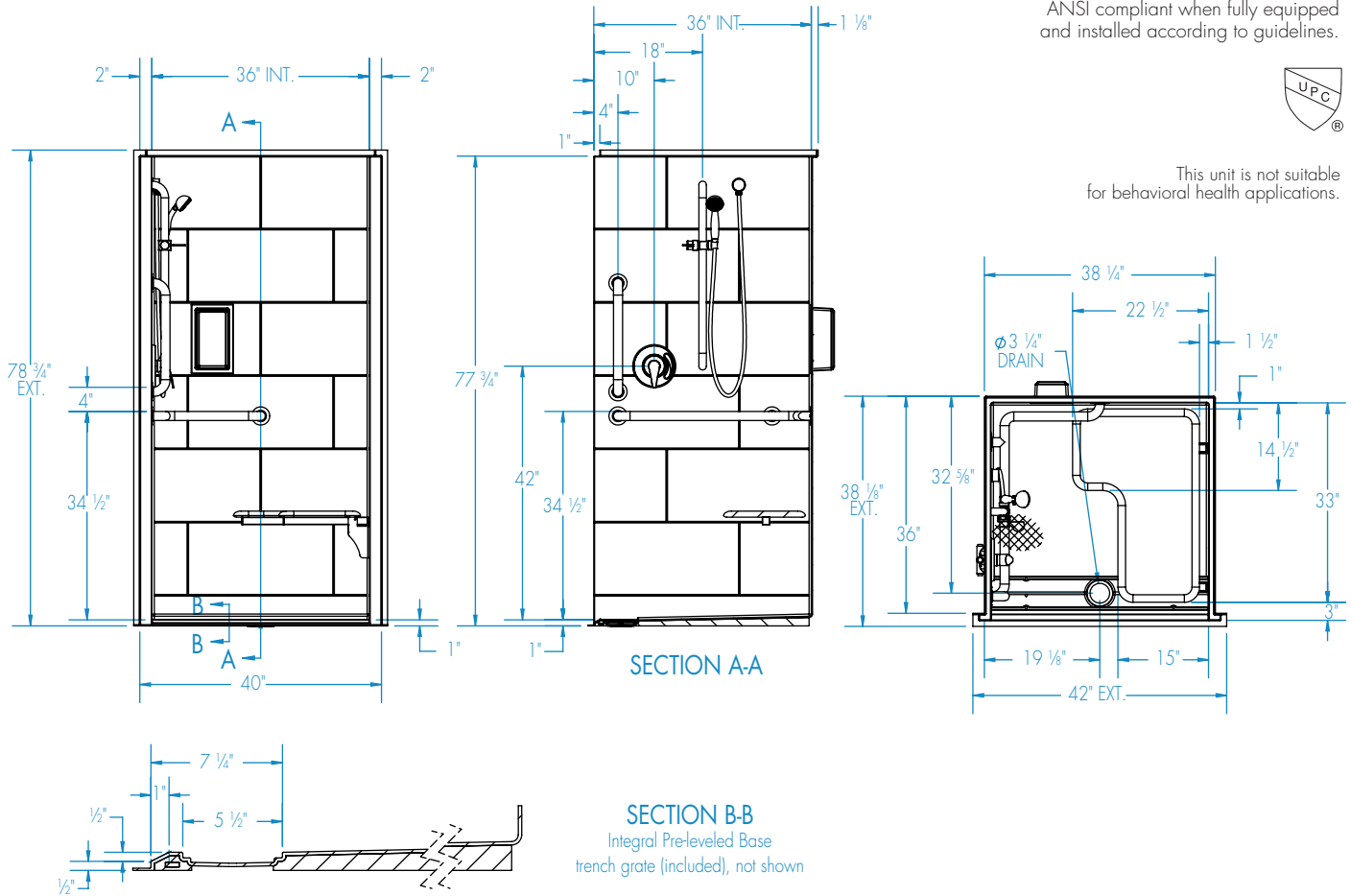
Right hand configuration shown with optional soap dish
This unit is not suitable for behavioral health applications.



ANSI compliant when fully equipped and installed according to guidelines.



This unit is not suitable for behavioral health applications.



FEATURES lbs Dimensional Tolerance $\pm \frac{3}{16}$ ". Dimensions needed for site preparation should be measured from the unit. Manufacturer assumes no responsibility for preparatory work.

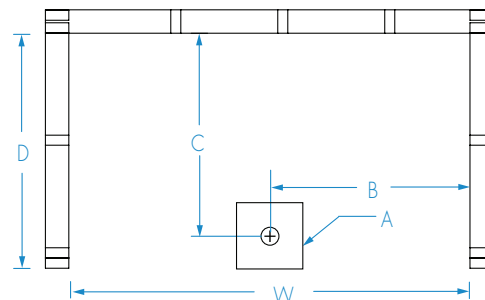
Type and Model #	Material	Wall Finish	Pieces	Drain	Dam/Skirt Height	Net Wt.	Pkg. Wt.
Shower XST3838TRCOL	AcrylX™ applied acrylic	Smooth tile	1	Center Front	$\frac{1}{2}$ " skirt $\frac{1}{2}$ " exterior COL threshold	140	150

DIMENSIONS

Specifications	inches (mm)
Width: Ext. / Int.	42 / 36
Depth: Ext. / Int.	38 $\frac{1}{8}$ / 36
Height: Ext. / Int.	78 $\frac{3}{4}$ / 76 $\frac{3}{4}$
Enclosure Opening:	36
Skirt Height:	$\frac{1}{2}$
Drain Rough-In (from Back Wall)	32 $\frac{5}{8}$
Drain Rough-In (from Side Wall)	19 $\frac{1}{8}$

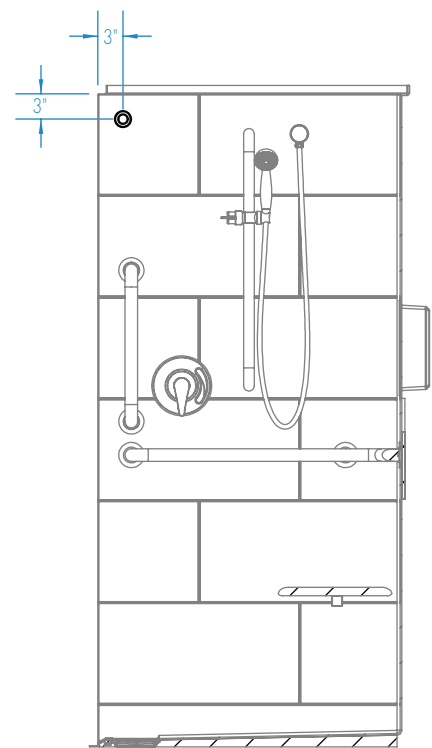
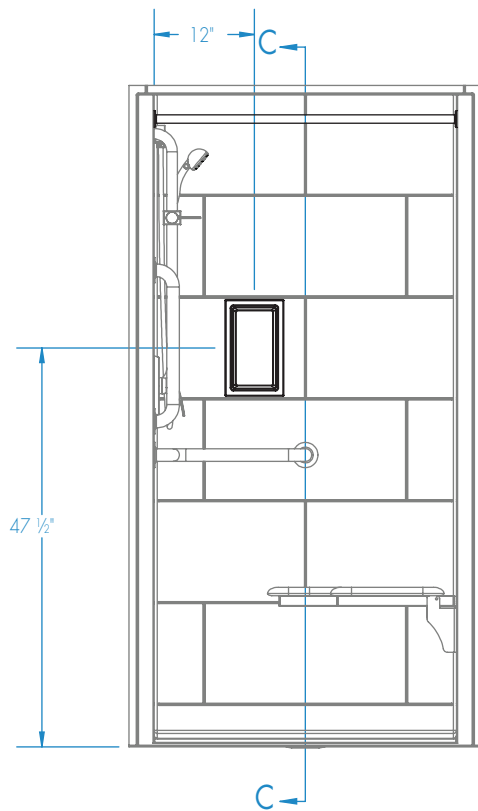
FRAMING DIMENSIONS inches (mm)

Type	D Depth	W Width	H Height	A	B	C
Alcove	36	38 $\frac{1}{4}$	-	Box Out	19 $\frac{1}{8}$	32 $\frac{5}{8}$



EMAIL TO THE CENTRALIZED CUSTOMER SERVICE CENTER: quotes@americanbathgroup.com

Curtain Rod and Soap Dish Locations (Standard Valve Configuration)



SECTION C-C